

Book direct for the best rates*



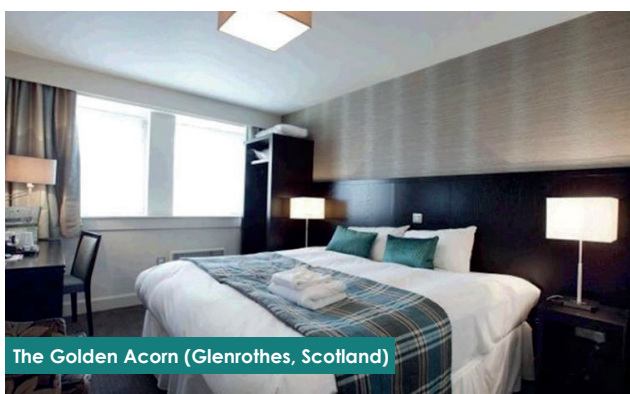
jdwetherspoon.com or the Wetherspoon app



The Saxon Crown (Corby, England)



Keavan's Port Hotel (Dublin, Ireland)



The Golden Acorn (Glenrothes, Scotland)



The Kings Head Hotel (Monmouth, Wales)

BREAKFAST

Served 7am - 12 noon

Large breakfast 1286 kcal Two fried eggs, bacon, two sausages, baked beans, three hash browns, mushroom, two slices of toast	8.38	Eggs Benedict 725 kcal Two poached eggs, on an English muffin, with Wiltshire cured ham, Hollandaise sauce, rocket	6.91
Traditional breakfast 742 kcal Fried egg, bacon, sausage, baked beans, two hash browns, slice of toast	6.71	Mushroom Benedict 629 kcal Two poached eggs, on an English muffin, with mushroom, Hollandaise sauce, rocket	6.91
Small breakfast 419 kcal Fried egg, bacon, sausage, baked beans, hash brown	5.83	Scrambled egg on toast 570 kcal Three eggs, buttered white bloomer toast	5.39
Large vegetarian breakfast 1206 kcal Two fried eggs, three Quorn sausages, baked beans, three hash browns, mushroom, tomato, two slices of toast	8.38	Beans on toast 566 kcal Buttered white bloomer toast	4.25
Vegetarian breakfast 816 kcal Two fried eggs, two Quorn sausages, baked beans, two hash browns, mushroom, tomato, slice of toast	6.71	Small beans on toast 251 kcal Buttered white bloomer toast	3.12
Small vegetarian breakfast 313 kcal Fried egg, Quorn sausage, baked beans, hash brown, tomato	5.83	Two slices of toast with jam or marmalade 496 kcal White bloomer bread	3.19
Vegan breakfast 786 kcal Two Quorn sausages, baked beans, two hash browns, mushroom, tomato, slice of toast, vegan spread	6.33	Fresh fruit 177 kcal Apple, banana, blueberries, strawberries	4.25
Freedom breakfast 545 kcal Two fried eggs, bacon, baked beans, two hash browns, mushroom, tomato	5.83	Porridge 252 kcal (plain) Add: Banana (101 kcal) 62p Strawberries (14 kcal) 62p Blueberries (17 kcal) 62p Honey (91 kcal) 34p	2.61

Breakfast extras

Add any of the following:

Sausage 168 kcal	1.05	Four rashers of maple-cured bacon 91 kcal	1.52	Hash brown 82 kcal	46p
Quorn™ sausage 116 kcal	1.05	Two scrambled eggs 136 kcal	1.63	Two mushrooms 91 kcal	93p
Baked beans 126 kcal	93p	Fried egg 56 kcal	93p	Two grilled tomato halves 16 kcal	52p
Two rashers of back bacon 99 kcal	1.57	Poached egg 63 kcal	93p	Slice of toast 191 kcal	1.13

Breakfast butties and wraps

Bacon butty 525 kcal Three rashers of bacon, buttered white bloomer bread	4.82	Breakfast sandwich 651 kcal Sausage, bacon, egg, buttered white bloomer bread	6.25
Sausage butty 713 kcal Two sausages, buttered white bloomer bread	4.82	Breakfast wrap 739 kcal Fried egg, bacon, sausage, hash brown, Cheddar cheese	5.95
Quorn™ sausage butty 609 kcal Two Quorn sausages, buttered white bloomer bread	4.82	Vegetarian breakfast wrap 835 kcal Fried egg, two Quorn sausages, two hash browns, Cheddar cheese	5.95

Breakfast muffin deal

Includes tea, coffee or hot chocolate. Free refills*

Egg & cheese muffin 249 kcal Fried egg, American-style cheese, in an English muffin	4.93
Egg & bacon muffin 298 kcal Fried egg, bacon, American-style cheese, in an English muffin	5.39
Egg & sausage muffin 417 kcal Fried egg, sausage, American-style cheese, in an English muffin	5.39
Egg & Quorn™ sausage muffin 364 kcal Fried egg, Quorn sausage, American-style cheese, in an English muffin	5.39
Breakfast muffin 466 kcal Fried egg, sausage, bacon, American-style cheese, in an English muffin	5.61
Smashed avocado muffin 244 kcal Guacamole, pico di gallo, on an English muffin, rocket Add: Maple-cured bacon (91 kcal) 1.52 Poached egg (63 kcal) 93p Add: Hash brown (82 kcal) 46p	5.61

All weights are approximate uncooked. Fish, chicken and meat dishes may contain bones. Specifications may change periodically, and Calories and other nutritional values stated (which exclude drinks options) are subject to change. All prices are in pounds sterling and include VAT. Pricing may vary per pub. Subject to local licensing restrictions and availability at participating free houses. Photography is for guidance only. J.D. Wetherspoon plc reserves the right to withdraw/change offers (without notice), at any time. See our website for full details: jdwwetherspoon.com
*Offer (excluding take-away) applies on day of purchase, during one visit; is non-transferable. Exclusions apply. *Non-refundable advance purchase rates, available to book direct on the telephone, our website and our app. *Statement of daily calorie needs from the Department of Health & Social Care. *Excluding decaffeinated. *Drinks exclude bottled wine, sparkling wine, Prosecco, cocktails, spritzes, liqueurs, bombs, shots and any drink not listed on the drinks menu. Mixers exclude J20 and all canned soft drinks, except Monster. An alternative may be offered for Coldwater Creek wines. Spirit measure offered is 25ml in all free houses, except Northern Ireland (35ml).

Tea, coffee and hot chocolate

FREE REFILLS
TEA, COFFEE AND HOT CHOCOLATE
— ALL DAY EVERY DAY —



£1.56 each

Biscuits	
Walkers shortbread 151 kcal	71p
Stem ginger biscuit 123 kcal	71p
Belgian chocolate biscuit 129 kcal	71p
Salted caramel brownie bar 316 kcal	1.64

Flat white 92 kcal	
Cappuccino 102 kcal	
Latte 113 kcal	
Mocha 147 kcal	
Espresso 6 kcal	
Black coffee 6 kcal	
White coffee 24 kcal (Oat milk available 4 kcal)	
Hot chocolate 169 kcal	
Tea with semi-skimmed milk 14 kcal (Oat milk available 4 kcal) Decaffeinated tea and coffee available.	

for the facts drinkaware.co.uk

jdwwetherspoon.com

STATION MENU_1169

FOOD

Main menu 11.30am - 11pm. Children's menu available.



The Willow Walk

Victoria

Willow Walk was originally the causeway across the marshy ground leading to Westminster Abbey. By the 18th century, the causeway had been replaced by the tree-lined thoroughfare called Willow Walk, in the area which was to become known as Victoria.



Food hygiene rating

We have been awarded the maximum food hygiene rating of 5 in our pub.



100% UK and Irish beef
Sourced from farms in the UK and Ireland. Traceable from farm to fork.



Free-range eggs
100% of the eggs we use are free range. All shell eggs are certified with the British Lion quality mark and are RSPCA assured, ensuring the highest standards of animal welfare.



Coffee
The freshly ground 100% Arabica Lavazza coffee* we serve is from Rainforest Alliance-certified farms.
Tea
The Tetley tea we serve also comes from Rainforest Alliance-certified farms. Tetley is a member of the Ethical Tea Partnership (ETP), aiming to improve tea sustainability.

Breakfast
7am - 12 noon
Traditional breakfast
£6.71

Tea, coffee and hot chocolate
Free refills*
£1.56 each

Burger meals

INCLUDES A DRINK

Featuring 3oz American burger soft drink* | alcoholic drink*
£7.59 | £9.21

Afternoon deals

INCLUDES A DRINK

Mon - Fri, 2pm - 5pm
Featuring small all-day brunch soft drink* | alcoholic drink*
£8.16 | £9.78

Curry Club

INCLUDES A DRINK

Thursday 11.30am - 11pm
Featuring the katsu grilled chicken curry soft drink* | alcoholic drink*
£9.92 | £11.54

INCLUDES A DRINK*
Choose from over 150 drinks

How to order from your table



Download the Wetherspoon app or scan this QR code.



Or note your table number and order at the bar.

wetherspoon **hotels**

57 in England, Ireland, Scotland and Wales
Book direct for the best rates*
jdwwetherspoon.com or on our app

goodfoodtalks
opening menus for everybody
The spoken menu app for the visually impaired



Allergen and nutritional information can be found on our customer information screen, website and Wetherspoon app. Adults need around 2000 kcal a day.*

